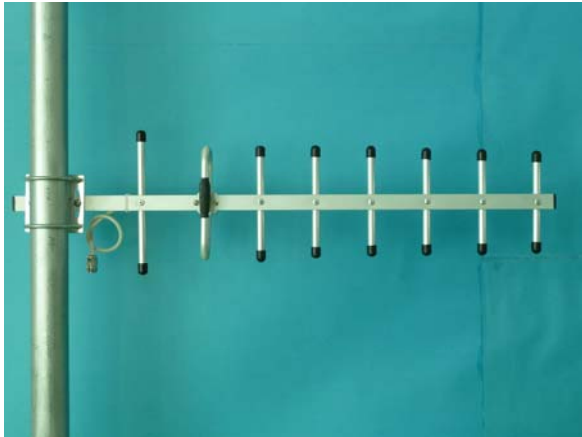




JIASHAN JINCHANG ELECTRON CO.,LTD

## Directional Yagi Antenna

JCY-900-12



### Features:

- High Gain
- Aluminum Alloy frame
- Full day for working
- Optimized dimension
- Optional installation H or V

### Application:

- GSM 900 Mobile telecommunication
- 900MHZ RFID System
- Repeater and Terminal antenna

Model NO	JCY-900-12
Electric Specification	
Frequency rang-MHz	824~960
Bandwidth -MHz	136
Gain -dBi	12
element	8
beam width -°	H: 48 V: 40
-dB	≥16
VSWR	≤1.5
Input Impedance-Ω	50
Polarization	Horizontal or Vertical
Max power -W	100
Lightning protection	DC ground
Connector model	N female or others
Mechanical Specification	
Size -mm	710*190*54
Cable length-m	0.3
Antenna weight-kg	0.42
Working Temperature -° c	-40~60
Rated Wind Velocity-m/s	60
Clamp	U type
Pole diameter -mm	Φ40~Φ50